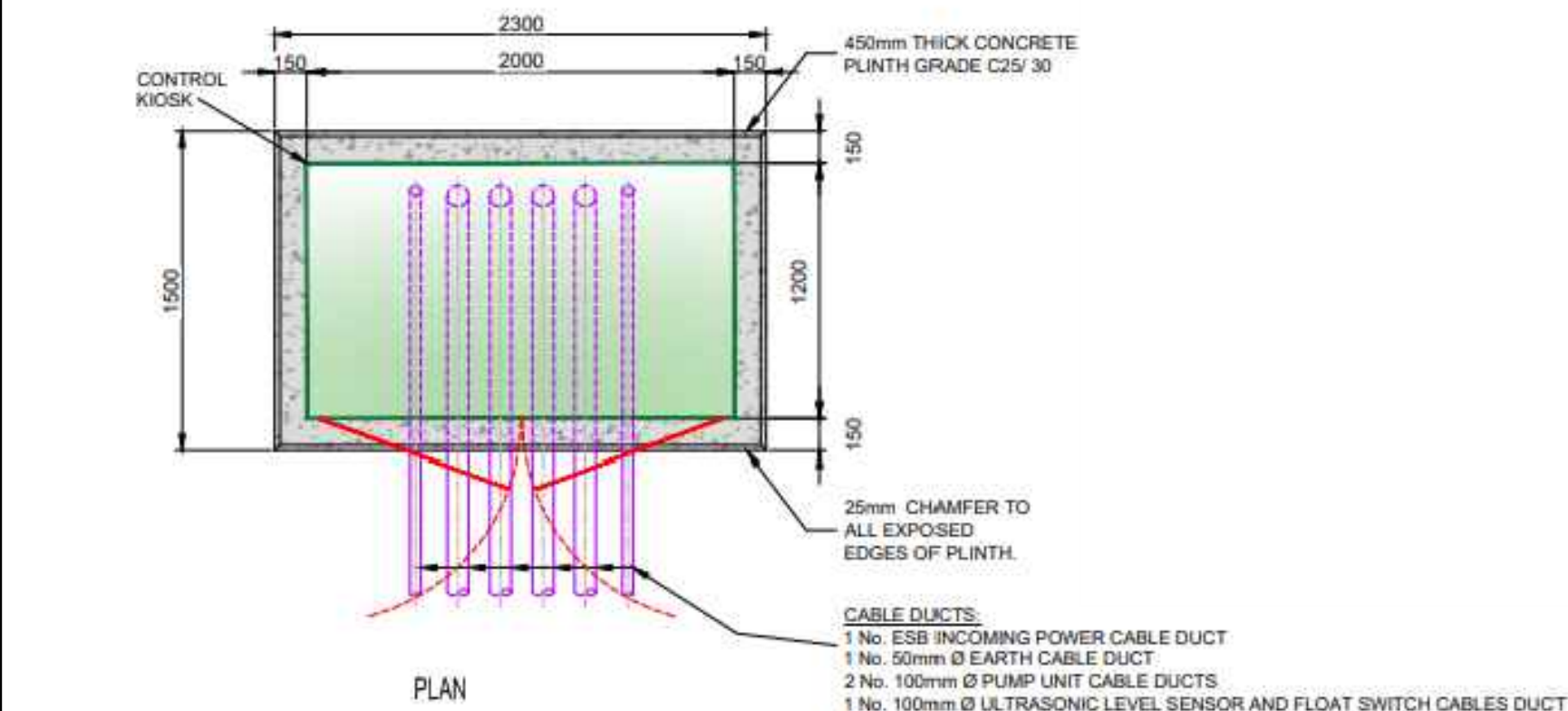
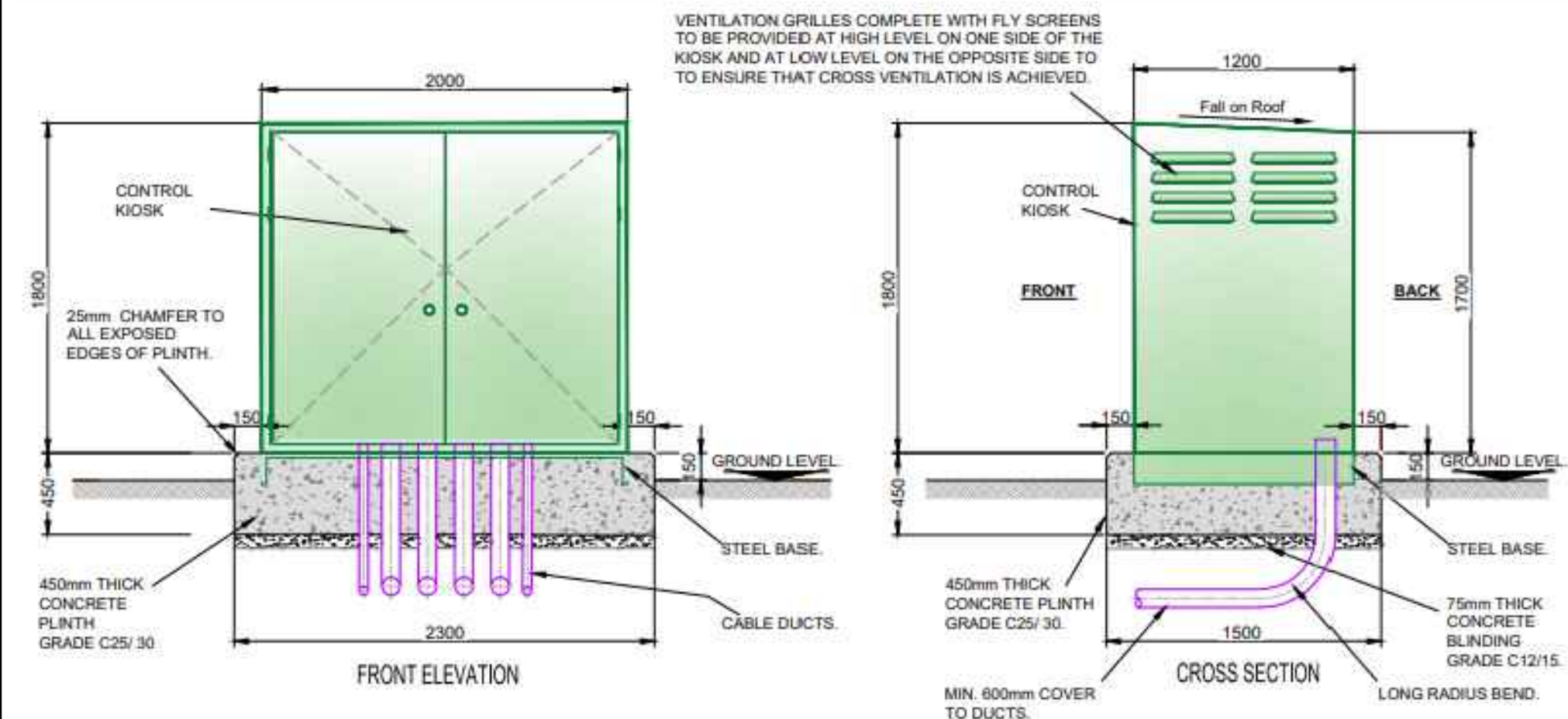


PLAN VIEW – PUMP STATION LOCATION
SCALE 1:250 @A1



- ALL DIMENSIONS ARE IN MILLIMETRES (mm) UNLESS NOTED OTHERWISE.
- PRE-CAST MANHOLES UNITS: COMPLYING WITH REQUIREMENTS OF IS EN 1917 AND BS 5911-PART 3.
- THICKER MANHOLE BASES REQUIRED FOR SEWERS IN EXCESS OF 3m DEEP WHERE THE SIZE IS GREATER THAN THE STANDARD MINIMUM SIZE.
- PRE-CAST CONCRETE BASES MAY BE USED INCORPORATING CHANNELS, BENCHING ETC. SUBJECT TO IRISH WATER REVIEW AND COMPLYING WITH BS 5911-PART 4 2002.
- STRUCTURAL DESIGN AND REINFORCEMENT DETAILS TO BE PROVIDED BY THE DEVELOPER AND SUBMITTED TO IRISH WATER FOR REVIEW.
- MANHOLE ROOFS SHOULD CONSIST OF A REINFORCED CONCRETE SLAB OF IN-SITU CONCRETE, C30/37, WITH A MINIMUM THICKNESS OF 225mm DESIGNED TO CARRY ALL LIVE AND DEAD LOADS, ALTERNATIVELY, APPROVED PRE-CAST CONCRETE ROOF SLABS MAY BE USED SUBJECT TO IRISH WATER REVIEW AND COMPLIANCE WITH BS 5911 PART 4: 2002.
- COVERS AND FRAMES SHALL BE SUITABLE FOR ROAD AND TRAFFIC CONDITIONS SUBJECT TO REVIEW BY IRISH WATER.
- 200mm ALL AROUND, 100mm DEEP CONCRETE PLINTH AROUND COVERS IN GREEN AREAS. ALL CHAMBERS TO BE CHECKED FOR UPLIFT BY THE DEVELOPER BASED ON GROUND CONDITIONS WITHIN THE SITE. SHOULD ANTI FLOATATION MEASURES BE REQUIRED THEY SHALL BE SUBJECT TO REVIEW BY IRISH WATER.
- ALL CONCRETE TO BE IN ACCORDANCE WITH IS EN 206.
- ANY SPECIAL ROAD REINSTATEMENT AROUND COVER & FRAME SHALL BE TO ROAD AUTHORITY'S REQUIREMENTS.
- NEW ROAD CONSTRUCTION & SURFACE FINISH TO BE TO ROAD AUTHORITY REQUIREMENTS.
- EXISTING ROAD REINSTATEMENT TO COMPLY WITH CURRENT VERSION OF "GUIDELINES FOR MANAGING OPENINGS IN PUBLIC ROADS" BY THE DEPT. OF TRANSPORT, TOURISM & SPORT, OR TRANSPORT INFRASTRUCTURE IRELAND REQUIREMENTS.

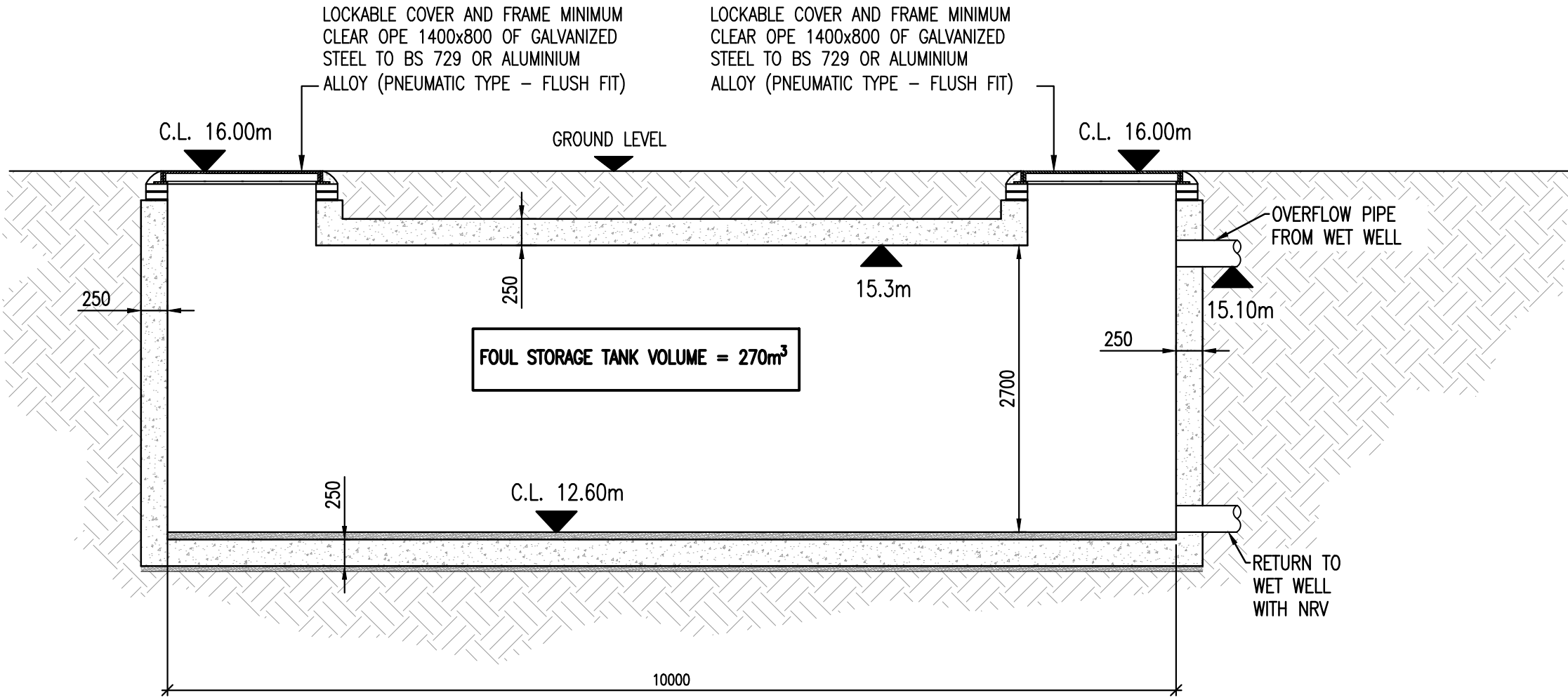
NOTE:
ALL PIPEWORK BETWEEN STRUCTURES ARE
EN598 DUCTILE IRON C/W ROCKERS
ARRANGEMENT

NOTE – PROPOSED ON-SITE FOUL WATER
PUMP STATION. DETAILED DESIGN TO BE
COMPLETED BY SPECIALIST.

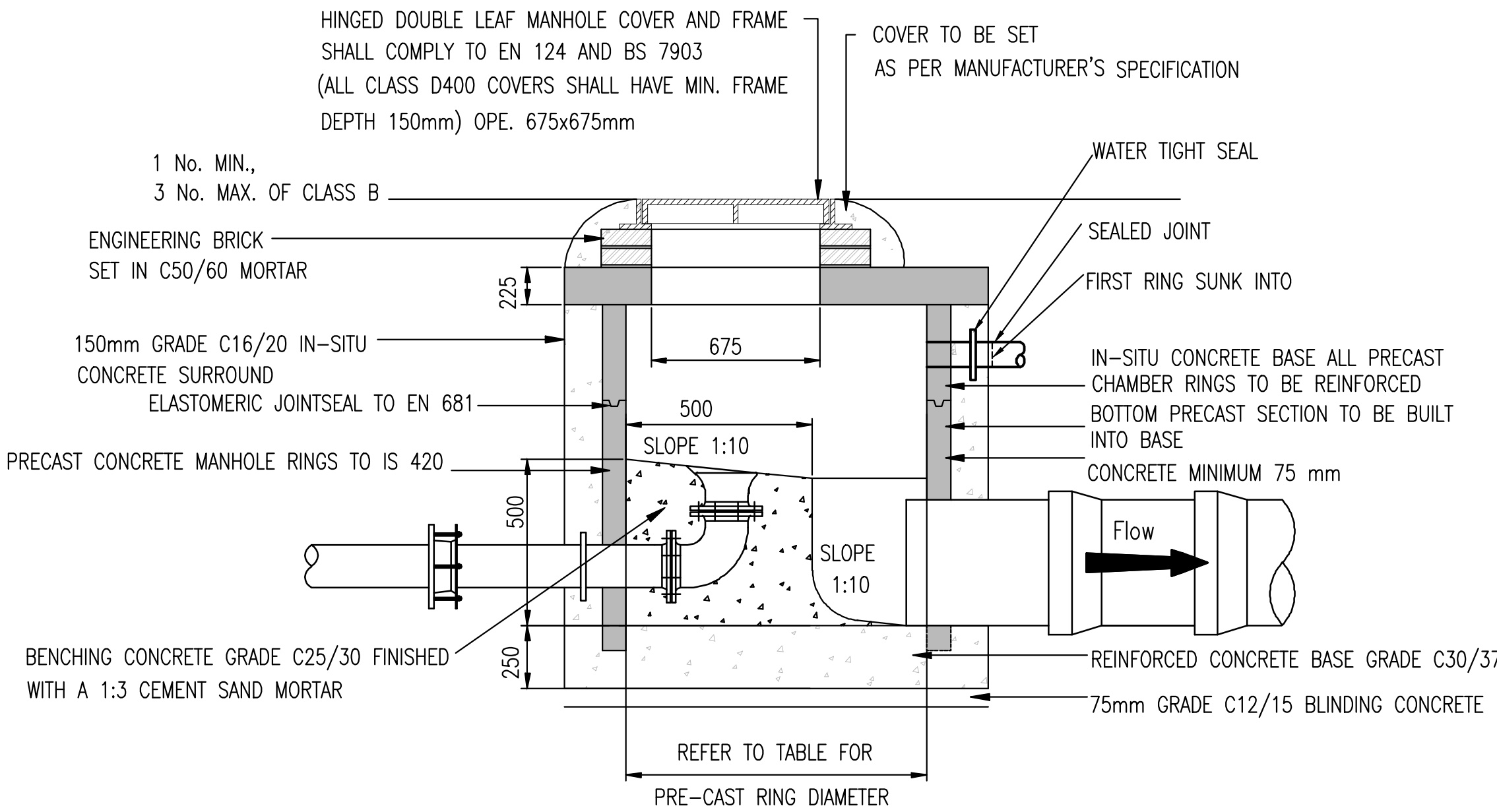
NOTE:
FOR CONTROL CABINET DETAILS REFER TO
IRISH WATER STANDARD DETAILS DRAWING
LATEST REVISION OF DRAWING STD-WW-30
AND STD-WW-31

MINIMUM MANHOLE DIAMETERS	
DIAMETER OF LARGEST PIPE IN MANHOLE (mm)	INTERNAL DIAMETER OF MANHOLE (mm)
LESS THAN 375	1200
375 TO 450	1350
500 TO 700	1500

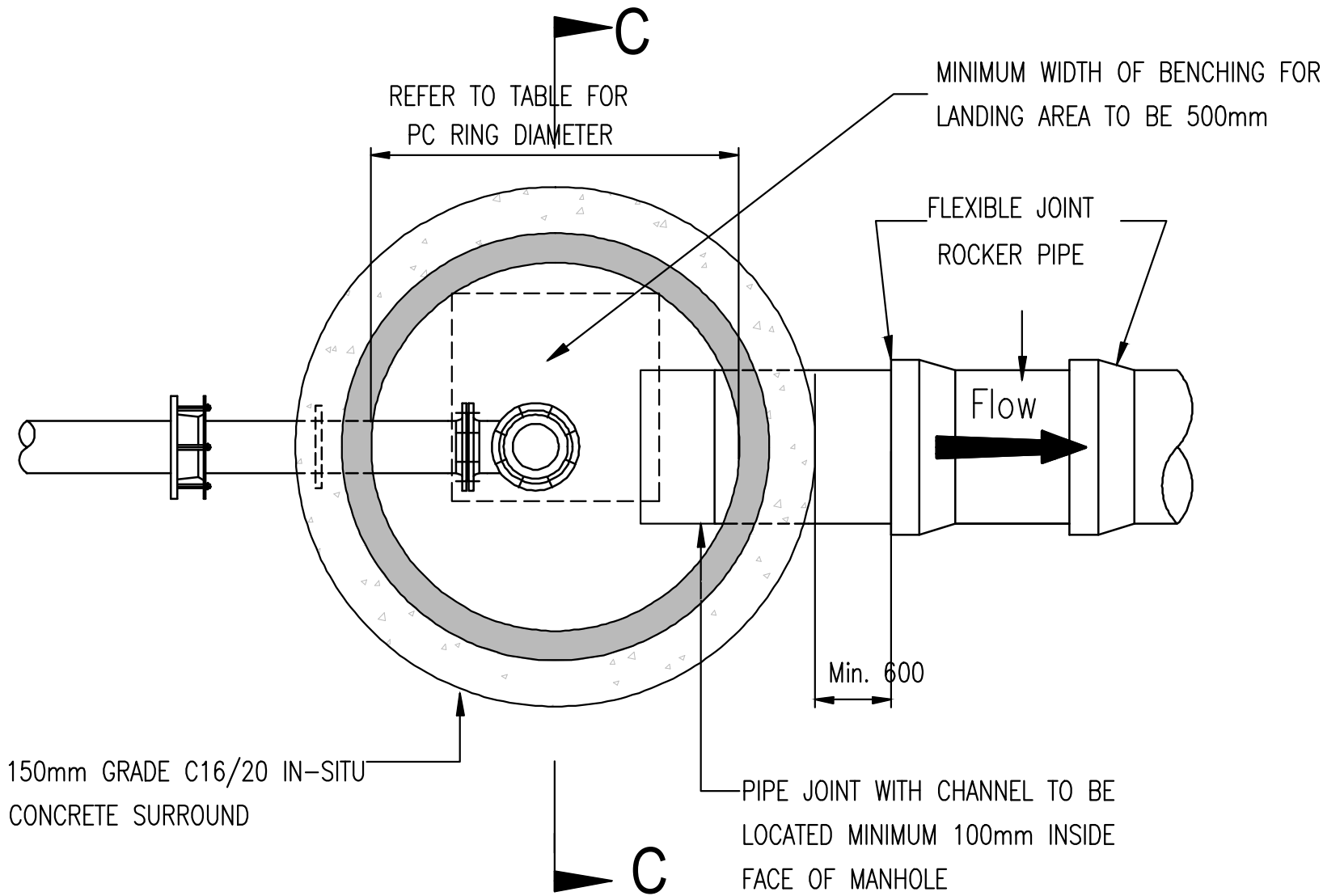
ROCKER PIPE LENGTH	
PIPE DIAMETER (mm)	ROCKER PIPE LENGTH (mm)
150 TO 600	600
GREATER THAN 600 TO 750	1000
GREATER THAN 750	1250



SECTION A-A
THROUGH ATTENUATION STORAGE TANK
SCALE 1:50



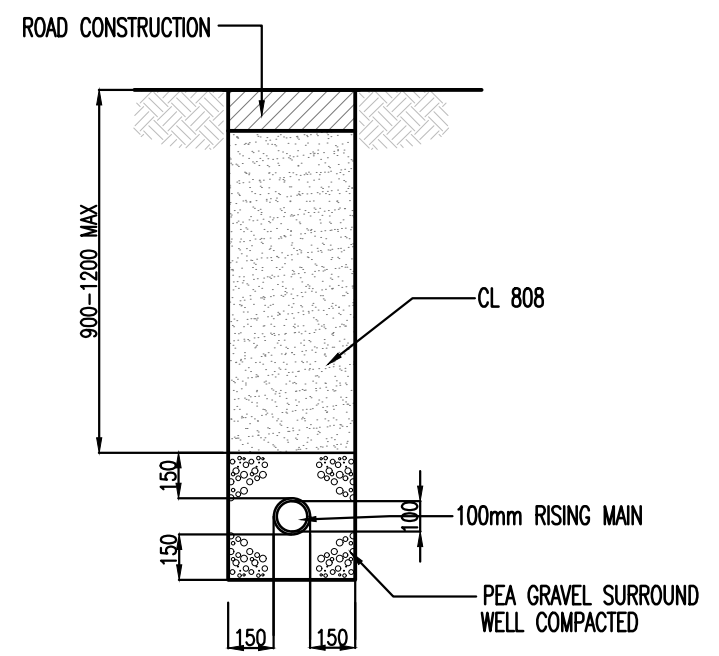
SECTION C-C



PLAN VIEW
STAND OFF MANHOLE DETAIL
Scale 1:25

This drawing should not be scaled. Dimensions to be verified on site.
Any discrepancies should be referred to the Engineer prior to work being put in hand.
This drawing is the property of Waterman Moylan Consulting Engineers Limited and is
wholly or in part without the consent in writing of
Waterman Moylan Consulting Engineers Limited
Block S East Point Business Park, Dublin D03 H3F4 Ireland
1-355 1 664 8900

- NOTES:
- DO NOT SCALE. USE FIGURED DIMENSIONS ONLY.
 - THIS DRAWING IS TO BE READ IN CONJUNCTION WITH ALL OTHER RELEVANT ARCHITECTURAL AND ENGINEERING DRAWINGS.



RISING MAIN TRENCH DETAIL
SCALE 1:25



Rev	Date	Description	By	Chk
A	13/06/25	LAYOUT UPDATES	LS	BG

Amendments	
Project	PROPOSED RESIDENTIAL DEVELOPMENT RATHMULLAN DROGHEDA
Title	FOUL PUMPING STATION DETAILS
Client	EARLSFORT DEVELOPMENTS DROGHEDA LIMITED



BLOCK S, EASTPOINT BUSINESS PARK, ALFIE BYRNE ROAD, DUBLIN D03 H3F4 IRELAND. Tel: (01) 864 8900 Email: info@waterman-moylan.ie www.waterman-moylan.ie	
Status	LRD PLANNING - STAGE 3
Designed By	JG
Approved	JG
Waterman Ref	18-014
Drawn By	G.Byrne
Date	MAY.2025
Project	RAT - WMX - PH2 - 00 - DR - C - P466
Volume	1
Level	1
Type	1
Rate	1
Number	1
Revision	1